

---

Client Data System®

# Installation Guide

Version 4.1.2 (Network Version - Servers)



*E-Z Data, Inc.*

Copyright 1998-2003, E-Z Data, Inc.

All Rights Reserved.

No part of this documentation may be copied, reproduced, or translated in any form without the prior written consent of E-Z Data, Inc.

All product names are trademarks of their respective manufacturers or organizations.



918 E. Green Street

Pasadena, CA 91106

Web: <http://www.ez-data.com>

Telephone: (626) 585-3505

Fax: (626) 440-9097

U.S. toll-free fax: (800) 779-3123

Revised: **09/26/03**

# Table of Contents

<b>Introduction .....</b>	<b>1</b>
Network Installation.....	2
Network Protocols .....	2
Network Expertise .....	2
<b>Hardware and Software System Requirements .....</b>	<b>3</b>
Minimum/Recommended hardware for the Server.....	3
Minimum/Recommended hardware for client workstations.....	3
<b>Using the Adaptive Server Anywhere 7.0 DBMS.....</b>	<b>4</b>
Other programs using Adaptive Server Anywhere 7.0 .....	4
About changing servers after installation .....	4
Updates and patches from Sybase .....	4
<b>Windows Server Installation .....</b>	<b>5</b>
Note regarding Windows NT/2000/XP server use.....	5
Windows 95/98/Me Users Only .....	5
Installation .....	5
<b>Windows Adaptive Server Anywhere 7.0 Startup .....</b>	<b>10</b>
Windows 95/98/Me.....	10
Windows NT .....	10
Sybase Engine Startup as a Windows NT Service.....	<b>Error! Bookmark not defined.</b>
Windows 2000.....	10
Sybase Engine Startup as a Windows 2000 Service .....	11
Windows XP .....	11
After the Server Installation Process.....	11
<b>NetWare Servers .....</b>	<b>12</b>
Server Installation .....	12
Novell NetWare 3.x, 4.xx, or 5.x Adaptive Server Anywhere Startup.....	20
After the Server Installation Process.....	20
<b>Appendix A - Setting Up Database Cache .....</b>	<b>21</b>
<b>Appendix B - Glossary of Terms .....</b>	<b>22</b>



## Introduction

E-Z Data, Inc.'s Client Data System (CDS) is a modular front office system designed to increase the marketing, sales, and customer servicing capabilities of insurance agents, investment advisors, and the companies they represent. This document contains instructions for installing Network version 4.1.2 of the application on a server. A companion volume that explains how to install the application on workstations is also available.

Performance of large applications in a network environment can seem slow and interfere with productivity. E-Z Data avoids this issue by employing the most resourceful tools available to achieve CDS's high performance. The program uses the most powerful and effective development language (Microsoft Visual C++) as well as the most robust and efficient DataBase Management System (DBMS) available—Adaptive Server Anywhere 7.0.

CDS uses Client/Server technology, which allows a network to run efficiently regardless of the amount of information in the system database or the number of users accessing it at the same time. For more information on this technology, see the Client/Server description in the [Glossary](#).

E-Z Data's more than fifteen years of leadership in client management software has resulted in innovative functionality that cannot be found in other programs. The unique SmartPad™, Letter Log, Sets, and valuable Dynamic Reports are industry-specific tools that will increase the effectiveness of your office. CDS makes accessing information, entering data and navigating through the system smooth and efficient. For more information on the system, please visit the E-Z Data, Inc. web site, [www.ez-data.com](http://www.ez-data.com).

# PLEASE READ THIS PAGE BEFORE CONTINUING

## Network Installation

The Installation of CDS on a Network is not complicated but does require some technical knowledge and attention to detail. The first part of the process is to follow the procedures in this guide to install Sybase Adaptive Server Anywhere 7.0 and the CDS program on the server.

The second part of the process is to follow the platform-specific procedures in the *Installation Guide for Workstations* to install the client software each workstation.

For [peer-to-peer](#) networks, where there is a non-dedicated server (i.e., the server computer is also used as a workstation), the server will have a directory for the Network installation of CDS and a different directory for the Client installation of CDS.

## Network Protocols

E-Z Data, Inc. strongly recommends using either the TCP/IP protocol or IPX/SPX compatible protocol (with N9etBIOS enabled over IPX/SPX) when using a Windows-based network. Internal testing and extensive polling of past CDS customers have shown superior DBMS performance when using either of these protocols.

## Network Expertise

The Installation requires as much as two hours' time to set up the server and the first workstation. The individual responsible for this installation should be competent in the following areas:

- Each Windows operating system supported by CDS, that will be used (Windows 98, Windows Me, Windows NT, Windows 2000, or Windows XP)
- Network protocols
- All of the configuration details for the computers that will be used on the CDS network

If an individual with this experience is not available, consider hiring a consultant to handle the installation. This is not a procedure for novices. E-Z Data personnel can provide telephone-consultation regarding network issues at the standard rate of \$75 per hour. Please contact the E-Z Data Sales department for details or to arrange for a consultation appointment.

## Network Type

This guide explains the procedure for installing the Sybase Adaptive Server Anywhere 7.0 software and the master copy of CDS on the server. Each type of network server (Windows and Novell NetWare) has its own installation chapter. After installing the software on the server, use the companion workstation installation guide to install and run CDS on each workstation.

## Typing Command Lines

While the setup wizard guides users through most of the installation process, some command lines will need to be typed in by hand.

Adaptive Server Anywhere 7.0 commands are case sensitive. When a server name **EZDATA** is listed in uppercase letters, ensure that it is typed in that way. When a switch, such as **-gd**, is listed in lowercase letters, ensure that it is typed in that way.

# Hardware and Software System Requirements

## Minimum/Recommended hardware for the Server

**400 MHz Pentium-class processor** (700 MHz or higher recommended)

**128 MB of RAM** (256 MB or higher recommended)

**2 GB of free hard disk drive space** for initial installation (4 GB recommended). In addition, plan to maintain additional free hard disk space of approximately four times the size of the CDSWIN directory, including all subdirectories, for program upgrades and database rebuilds. This additional space is still required on the C: drive even if the CDSWIN directory is maintained on a different drive.

**Microsoft® Windows® 98, Me, NT, 2000, or XP** operating system

**Netware 3.x/4.x/5.x** (6.x is not currently supported by the program)

CDS runs across Microsoft compatible LANs (Local Area Networks) with the following protocols:

- IPX/SPX compatible protocol (with NetBIOS enabled over IPX/SPX)
- TCP/IP (must be selected during Server installation)

**Note:** Client Data System **does not** currently support **Microsoft Server 2003**. For information on future compatibility with this application, please contact [E-Z Data Technical Support](#).

## Minimum/Recommended hardware for client workstations

- **266 MHz Pentium-class processor** (400 MHz or higher recommended)
- **64 MB of RAM** (128 MB or higher recommended)
- **100 MB of free hard disk space.** Workstations that are used for database maintenance procedures should have three times the size of the largest CDS database as free hard disk space on the drive.
- Full access to the network server directory containing CDS program and data files
- **Microsoft® Word 97**, or a later version, is required to use Word as the default word processor in CDS. Earlier versions of Word can be used independently of CDS on the same computer.
- **Microsoft® Outlook 2000 or Lotus Notes R5**, or a later version, is required to use the E-Z Mail interface. Please note that the program does not support Microsoft® Outlook Express.
- **Palm™ Desktop for Windows software version 3.0.1**, or a later version, is required to use the E-Z Conduit Module.

## Notes regarding CDS client/server requirements for NT/2000/XP networks

- The user performing the installation must have Administrator rights to the server where CDS will be installed.
- CDS users must be granted full access rights to the server directory containing CDS program and data files.
- Each client workstation must be mapped to the server. E-Z Data, Inc. recommends mapping the same drive letter to the server on all workstations to avoid confusion.
- CDS users must have full administration rights to local workstations.

## Notes regarding CDS client/server requirements for Novell networks

- The user performing the installation must have Supervisor or Administrator rights to the Novell server.
- CDS users must be granted full access rights to the server directory containing CDS program and data files
- Each client workstation must be mapped to the server. E-Z Data, Inc. recommends mapping the same drive letter to the server on all workstations to avoid confusion.
- Each workstation should be operating with the most current Novell Client software (refer to Novell's web site at [www.novell.com](http://www.novell.com)).
- NetWare 4.x users must use the TCP/IP protocol to install Client Data System 4.1.2 using Adaptive Server Anywhere 7.0.
- CDS supports NetWare versions up to and including 5.0. For information on future compatibility with NetWare 6.0, please contact [E-Z Data Technical Support](#).

## Using the Adaptive Server Anywhere 7.0 DBMS

### Other programs using Adaptive Server Anywhere 7.0

If Sybase Adaptive Server Anywhere 7.0 is already installed, the name of the database server is needed to complete the installation. This name is available from the console window of the database server.

During the installation of CDS, the user is prompted to enter the default Database Server Name, EZDATA. If Sybase Adaptive Server Anywhere is being used with another application, use the existing name of the Database Server. Please note that the database server name is case sensitive.

### About changing servers after installation

The Adaptive Server Anywhere 7.0 software is specific to each operating system. For example, the Windows NT Adaptive Server Anywhere server software is different than the Adaptive Server Anywhere software for a Windows 98 server or a Novell NetWare server. Please note that any change in the operating system of the network server must be accompanied by a change in the Adaptive Server Anywhere software version.

### Updates and patches from Sybase

**Do not** install updates and patches for the Sybase Adaptive Server Anywhere software without instructions from E-Z Data's Technical Support department. E-Z Data is not responsible for system problems that may occur after installing incompatible versions or patches.



## Windows Server Installation

### Note regarding Windows NT/2000/XP server use

Installing the CDS and Sybase software using the default settings for a Windows NT/2000/XP server works well and is appropriate in most cases. However, managing the initial installation of CDS, as well as future maintenance procedures, will be more efficient if the CDS and Sybase software is installed in a common directory on the server (e.g., c:\apps\cdswin.svr, c:\apps\sqlany~1).

### Windows 98/Me Users Only

**Norton AntiVirus Users:** Disable Norton AntiVirus Auto-Protect before installing CDS.

1. From the desktop, select **Start, Programs, Norton AntiVirus**, and then click **Norton AntiVirus**.
2. Select **Options** and click the **Auto-Protect** tab.
3. Clear the checkmark next to the **Load Auto-Protect at Startup** option and click the **OK** button.
4. Click the **Yes** button when prompted to unload Auto-Protect.
5. Exit Norton AntiVirus.

### Installation

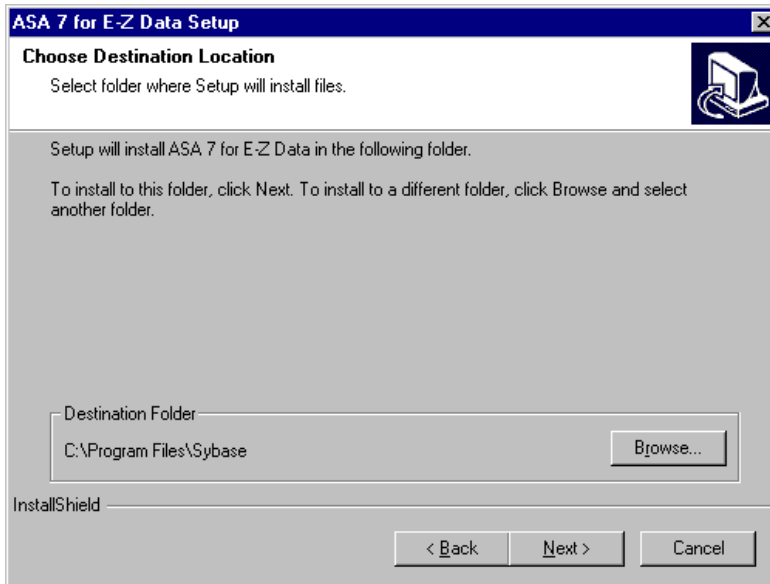
This procedure installs the Sybase Adaptive Server Anywhere and the CDS software on a Windows 98/Me/NT/2000/XP server.

1. Close any Windows applications that are currently running, including any suite products. To open the Task List, press the **CTRL+ALT+DEL** keys. Select and then click the **End Task** button for each task except **Explorer** and **Systray**.
2. Insert the Client Data System CD into the CD-ROM drive. The E-Z Data Setup program should start automatically. If it does not start, continue with the next step. Otherwise, skip to Step 5 to proceed with the installation.
3. From the Taskbar, click the **Start** button and then select **Run**.
4. Click the **Browse** button to open the Browse dialog box. From the **Look in:** field, select the CD-ROM drive from the drop-down menu.
5. Click the **CDS** button and then click the **Install** button to proceed with the installation.
6. After reading the Welcome message, click the **Next** button to continue.
7. After reading the Software License Agreement, click the **Yes** button to accept the terms of the license and continue with the installation.
8. In the Installation Type dialog box, select the **CDS Installation/Upgrade** option and click the **Next** button.
9. In the Select Components dialog box, click the **Server** button.

**Note:** If the Adaptive Server Anywhere 7.0 has already been installed, Steps 10-17 will be omitted.

10. A message box will indicate that Adaptive Server Anywhere 7.0 needs to be installed before running the CDS installation. Click the **Yes** button to continue.
11. Select the **Windows95/98/NT/Me/2000/XP Server (typical)** option and click the **Next** button.

- Click the **Next** button to accept the default directories where the Adaptive Server Anywhere 7.0 components will be installed.



- When the installation is complete, select the **Yes, I want to restart my computer now** option and click **Finish** to restart the computer.

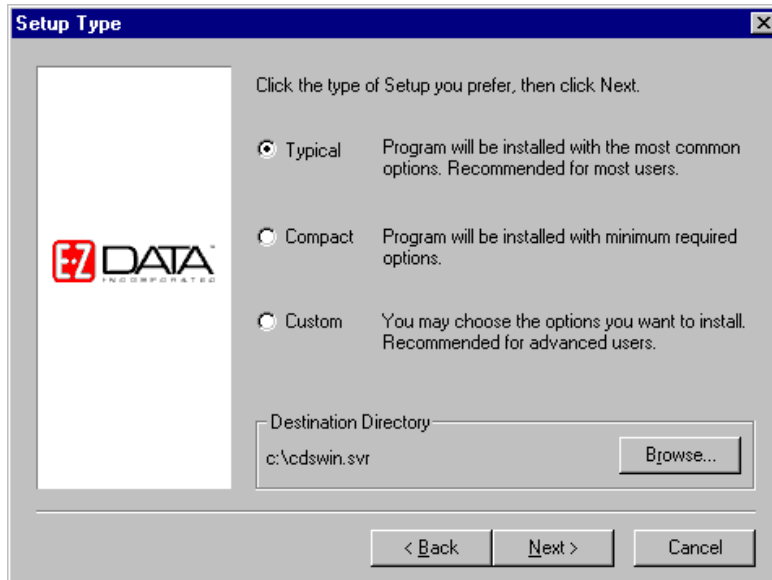


- When prompted, click the **OK** button to reboot the server.

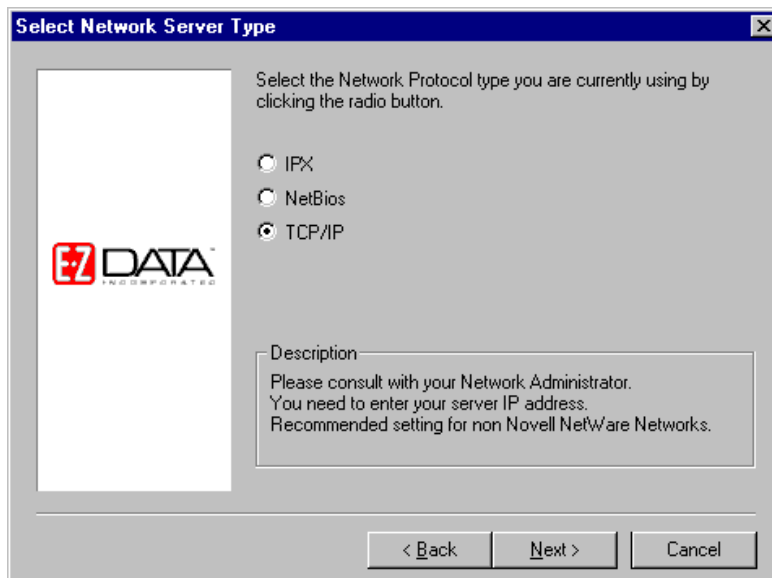
**Note:** The computer may take a couple of minutes to restart. Do not shut the power off or reset the computer unless it has definitely stopped responding to the Setup program.

- From the Taskbar, click the **Start** button and select **Run** to open the Run dialog box.
- Click the **Browse** button to open the Browse dialog box. From the **Look in:** field, select the CD-ROM drive from the drop-down menu.
- Double-click the **EZSetup** icon. When prompted, click the **OK** button to start the Setup program.

18. Click the **CDS** button and then click the **Install** button to continue with the installation.
19. After reading the Welcome message, click the **Next** button to continue.
20. In the Setup Type dialog box, use **Typical** for the type of Setup. The Compact or Custom setups are not recommended for network installations. In the same dialog box, the default Destination Directory is C:\CDSWin.Svr. If necessary, click the **Browse** button to specify another directory (e.g., C:\Apps\CDSWin.Svr). Click the **Next** button when the Destination Directory is correct.

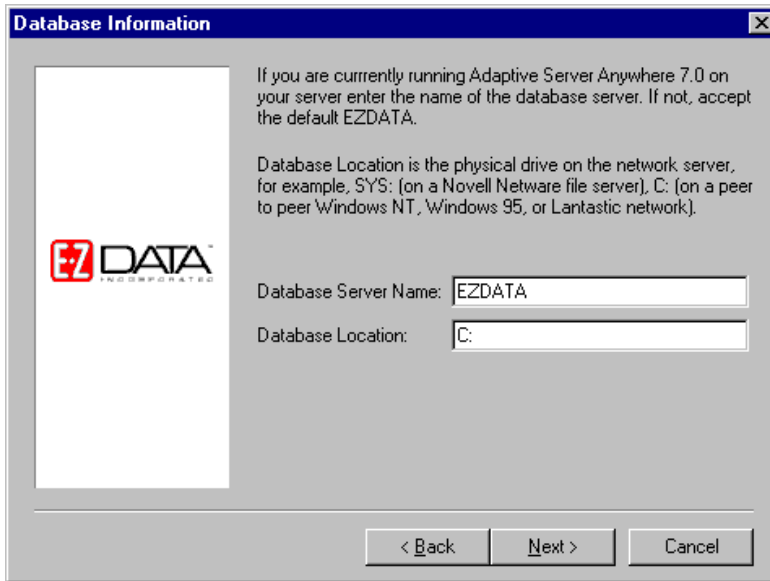


21. In the Select Network Server Type dialog box, select the radio button next to the appropriate protocol for the existing network and then click the **Next** button.

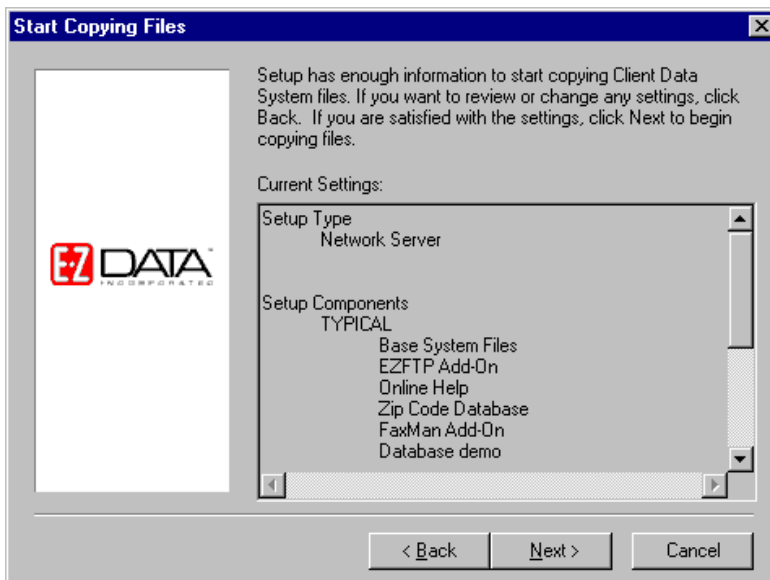


22. In the Database Information dialog box, use **EZDATA** as the Database Server Name and **C:** for the Database Location (these are the default settings). Change these settings if necessary and then click the **Next** button to continue.

**Note:** If Sybase Adaptive Server Anywhere 7.0 is being used for another software application, use the name of that database server. The name is available from the task list of the database server. Please note that this name is case sensitive.

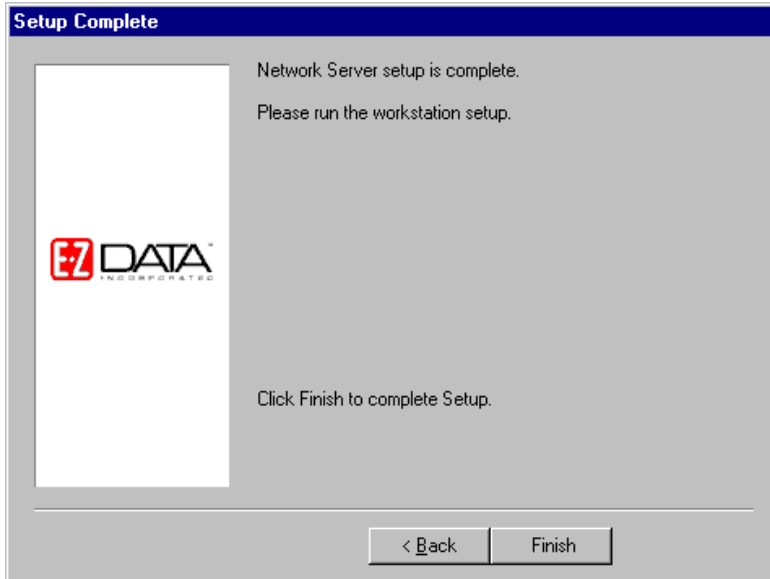


23. In the Start Copying Files dialog box, review the list of Current Settings. If a change is required, click the **Back** button. Otherwise, click the **Next** button to begin. A progress bar will track the status of the files being copied.



24. When the progress bar is at 97%, a prompt to insert the Control File diskette into drive A opens. Insert the diskette (or type C:\ in the dialog box if the file was copied to the hard disk) and then click the **OK** button to continue with the installation. A folder containing the new icons may open and obscure the dialog box. If this occurs, minimize the open folder to display the dialog box to continue.

25. When the Server Setup is complete, click the **Finish** button to close the Setup program. If a Control File diskette is still in drive A, remove it before continuing.



### **Windows 95/98/Me Users Only**

**Norton AntiVirus Users:** Re-enable Auto-Protect as explained below.

1. From the Desktop, select **Start, Programs, Norton AntiVirus**, and then click **Norton AntiVirus**.
2. Select **Options** and click the **Auto-Protect** tab.
3. Check the **Load Auto-Protect at Startup option** and click the **OK** button.
4. Click the **Yes** button when prompted to load Auto-Protect.
5. Exit Norton AntiVirus.

Program icons for CDS are not created during the software installation for the server. Icons are created during the installation of each workstation.

The CDS server installation is complete. Refer to the next section for information on running the server software.

# Windows Adaptive Server Anywhere 7.0 Startup

## Windows 98/Me

1. From the Windows desktop, click the **Start** button, point to **Settings**, and then select **Taskbar & Start Menu**.
2. Click the **Start Menu Programs** tab, and select **Add** button.
3. Type the [path](#) to the **dbsrv7** file in the Command line field and then click the **Next** button.  
Example: `C:\Progra~1\Sybase\sqlany~1\win32\dbsrv7  
-n EZDATA -gd all -gp 4096`  
(Refer to Appendix A for details about setting up the database cache)
4. In the Select Program Folder dialog box, select **Startup** and then click the **Next** button.
5. Name the shortcut **SQL Server** and then click the **Finish** button.
6. Reboot the computer to start Adaptive Server Anywhere 7.0.

## Windows NT

1. From the Windows desktop, click the **Start** button, point to **Settings**, and then select **Taskbar**.
2. Click the **Start Menu Programs** tab, and select **Add** button.
3. Type the [path](#) to the **dbsrv7** file in the Command line field and then click the **Next** button.  
Example: `C:\Progra~1\Sybase\sqlany~1\win32\dbsrv7  
-n EZDATA -gd all -gp 4096`  
(Refer to Appendix A for details about setting up the database cache)
4. In the Select Program Folder dialog box, select **Startup** and then click the **Next** button.
5. Name the shortcut **SQL Server** and then click the **Finish** button.
6. Reboot the computer to start Adaptive Server Anywhere 7.0.

## Windows 2000

1. From the Windows desktop, click the **Start** button, point to **Settings**, and then select **Taskbar and Start Menu**.
2. Click the **Advanced** tab, and select **Add** button
3. Type the [path](#) to the **dbsrv7** file in the Command line field and then click the **Next** button.  
Example: `C:\Progra~1\Sybase\sqlany~1\win32\dbsrv7 -n EZDATA -gd  
all-gp 4096`  
(Refer to Appendix A for details about setting up the database cache)
4. In the Select Program Folder dialog box, select **Startup** and then click the **Next** button.
5. Name the shortcut **SQL Server** and then click the **Finish** button.
6. Click the **OK** button on the Taskbar and Start Menu Properties dialog box.
7. Reboot the computer to start Adaptive Server Anywhere 7.0.

## Sybase Engine Startup as a Windows NT Service

The Sybase Adaptive Server Anywhere 7.0 DBSVC command can be used to start the Sybase engine as a Windows NT service.

To run the server engine as a service:

1. From the Windows desktop, click the **Start** button and then select **Run** to open the Run dialog box.
2. Type the following command line and the complete [path](#) to the **dbsrv7** file in the Open field and then click the **OK** button.

Example: `dbsvc.exe -i -as -t network -s automatic -w EZDATA  
C:\Progra~1\Sybase\SQLAny~1\win32\dbsrv7.exe -n EZDATA  
-gd all -gp 4096`

(Refer to Appendix A for details about setting up the database cache)

3. From the Windows desktop, click the **Start** button, point to **Settings**, select **Control Panel**, and then point to **Administrative Tools** and click **Services**.
4. From the Services folder, right-click the **Adaptive Server Anywhere Service** listing and, from the context menu, select **Start** to start the service.

### Sybase Engine Startup as a Windows 2000/XP Service

The Sybase Adaptive Server Anywhere 7.0 DBSVC command can be used to start the Sybase engine as a Windows 2000 service. To run the server engine as a service:

1. From the Windows desktop, click the **Start** button and then select **Run** to open the Run dialog box.
2. Type the following command line and the complete [path](#) to the **dbsrv7** file in the Open field and then click the **OK** button.

Example: `dbsvc.exe -i -as -t network -s automatic -w EZDATA  
C:\Progra~1\Sybase\SQLAny~1\win32\dbsrv7.exe -n EZDATA  
-gd all -gp 4096 -tl 0 -ti 0`

(Refer to Appendix A for details about setting up the database cache)

3. From the Windows desktop, click the **Start** button, point to **Settings**, select **Control Panel**, and then point to **Administrative Tools** and click **Services**.
4. From the Services folder, right-click the **Adaptive Server Anywhere Service** listing and, from the context menu, select **Start** to start the service.

### Windows XP

1. From the Windows desktop, double-click **My Computer** and browse to the **Startup** folder (e.g., `C:\Documents and Settings\All Users\Start Menu\Programs\Startup`).
2. Right-click in the Startup window, point to **New** and then select **Shortcut**.
3. In the Create Shortcut dialog box, type the complete [path](#) to the **dbsrv7** file in the Command line field and then click the **Next** button.

Example: `C:\Progra~1\Sybase\sqlany~1\win32\dbsrv7 -n EZDATA -gd  
all-gp 4096`

(Refer to Appendix A for details about setting up the database cache)

4. Name the shortcut **SQL Server** and then click the **Finish** button.
5. Reboot the computer to start Adaptive Server Anywhere 7.0.

### After the Server Installation Process

Once the server has been set up, install CDS on each workstation on the related network. For information on this installation, refer to the *CDS Installation Guide (Workstations)*.

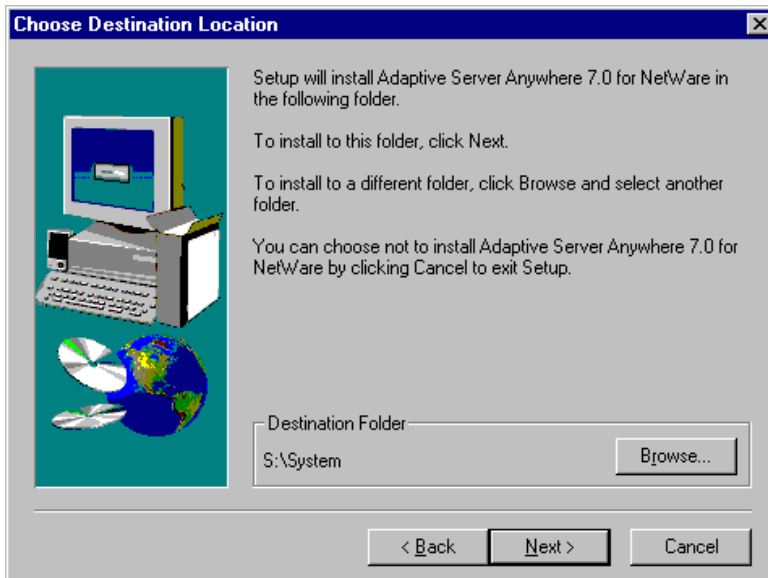
# NetWare Servers

## Server Installation

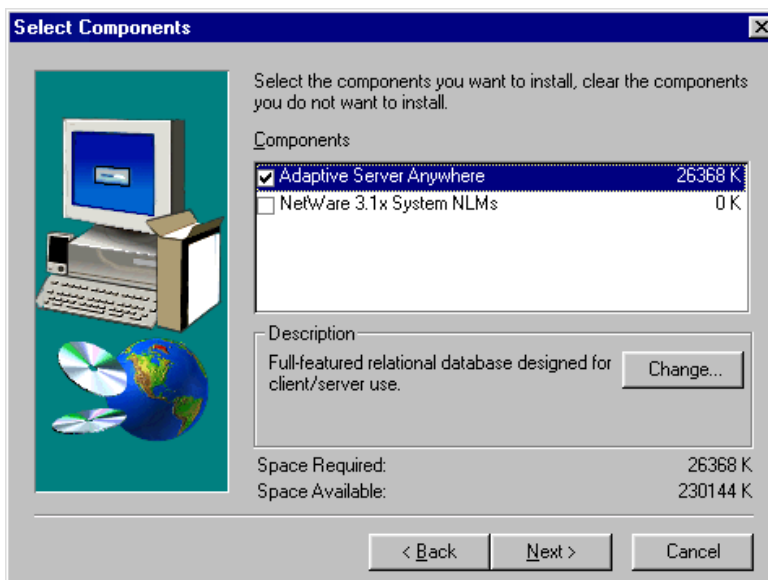
This procedure installs Adaptive Server Anywhere and CDS software on a Novell server.

1. Login to the Novell server with Administrator or Supervisor rights from a workstation with a CD-ROM drive.
  2. Close any Windows applications that are currently running, including any suite products. To open the Task List, press the **CTRL+ALT+DEL** keys. Select and then click the **End Task** button for each task except **Explorer** and **Systray**.
  3. Insert the Client Data System CD into the CD-ROM drive. The E-Z Data Setup program should start automatically. If it does not start, continue with the next step. Otherwise, skip to Step 7 to proceed with the installation.
  4. From the Taskbar, click the **Start** button and then select **Run** to open the Run dialog box.
  5. Click the **Browse** button to open the Browse dialog box. From the Look in: field, select the CD-ROM drive from the drop-down menu.
  6. Double-click the **EZSetup** icon and then click the **OK** button in the Run dialog box to start the Setup program.
  7. Click the **CDS** button and then click the **Install** button to proceed with the installation.
  8. After reading the Welcome message, click the **Next** button to continue.
  9. After reading the Software License Agreement, click the **Yes** button to accept the terms of the license and continue with the installation.
  10. In the Installation Type dialog box, select the **CDS Installation/Upgrade** option and click the **Next** button.
  11. In the Select Components dialog box, click the **Server** button.
  12. A message box will indicate that Adaptive Server Anywhere 7.0 needs to be installed before running the CDS installation. Click the **Yes** button to continue.
  13. Select the **Novell NetWare Server** option and then click **Next**
- Note:** If Adaptive Server Anywhere 7.0 has already been installed, steps 14-26 will be omitted
14. In the Adaptive Server Anywhere 7.0 for NetWare Welcome dialog box, click the **Next** button to open the Choose Destination Location dialog box.
  15. Sybase uses **S:** as the default drive letter for component installation. Browse to the letter currently mapped to the Novell server and specify the **System** folder. After changing the drive letter and destination folder as needed, click the **Next** button to accept the directories where Sybase Adaptive Server Anywhere components will be installed.



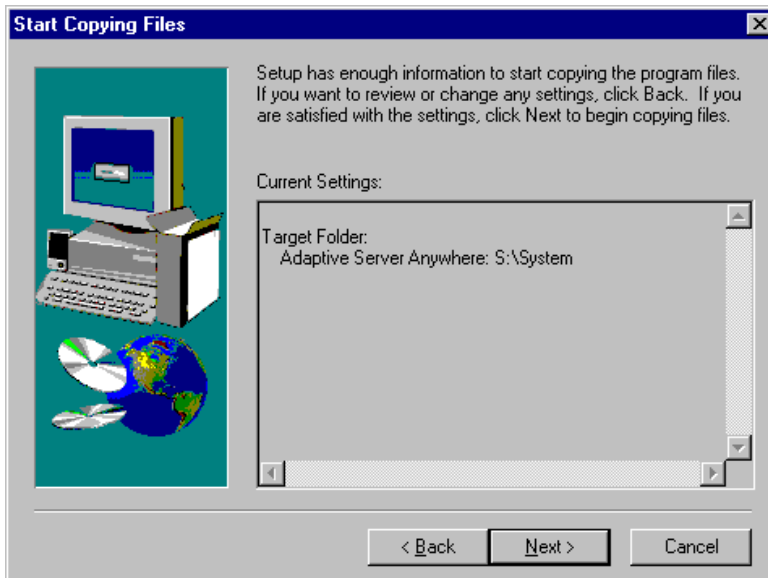


16. Select **Adaptive Server Anywhere** in the Select Components dialog box and then click the **Next** button.



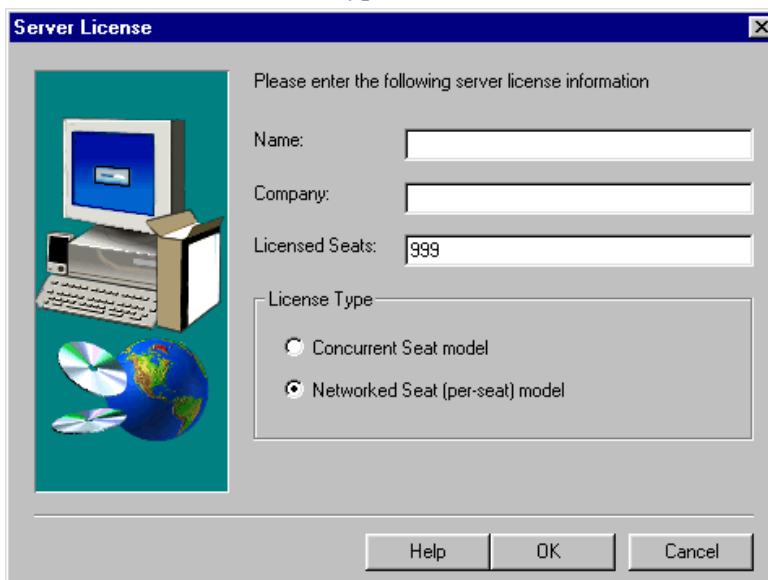
**Note for NetWare 3.1x users:** Select the NetWare 3.1x System NLMs component, as well as the Adaptive Server Anywhere component.

17. In the Start Copying Files dialog box, review the list of Current Settings. If a changed is required, click the **Back** button. Otherwise, click the **Next** button to begin. A progress bar will track the status of the files being copied.



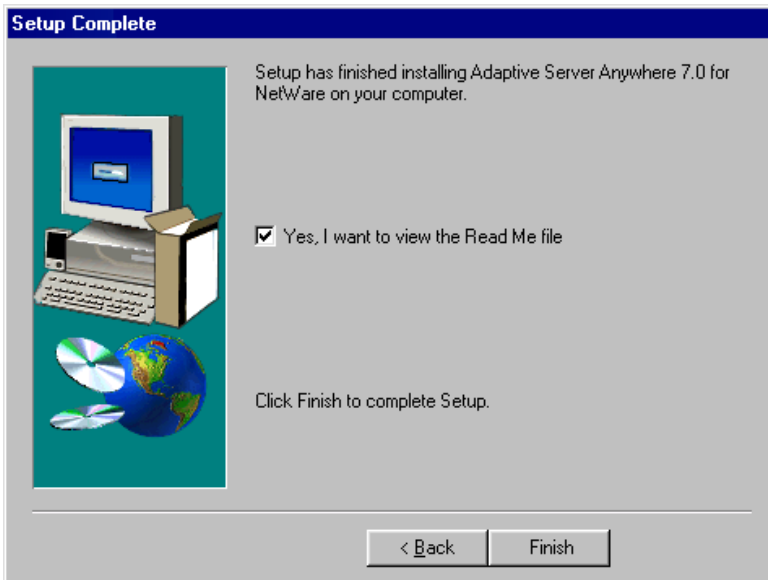
18. In the Server License dialog box, enter the relevant **Name** and **Company** information.

19. In the **Licensed Seats** field, type: **999**.

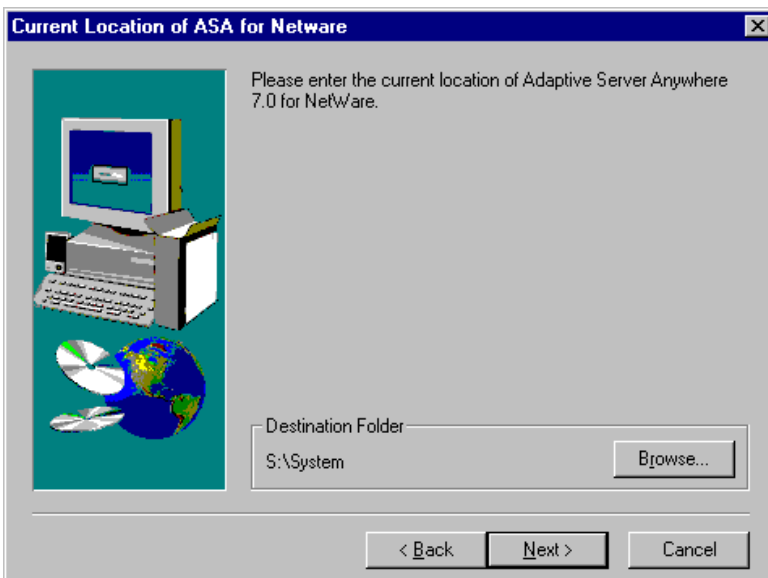


20. In the License Type section, select the **Networked Seat (per seat) model** option and click the **OK** button.

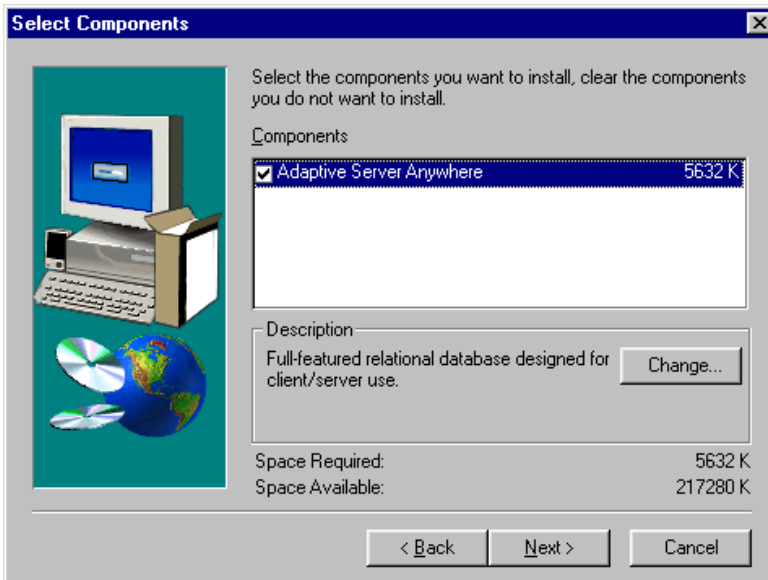
21. In the Setup Complete dialog box, click the **Finish** button to complete Adaptive Server Anywhere Setup and open the Adaptive Server Anywhere 7.0 for NetWare (EBF) installation wizard.



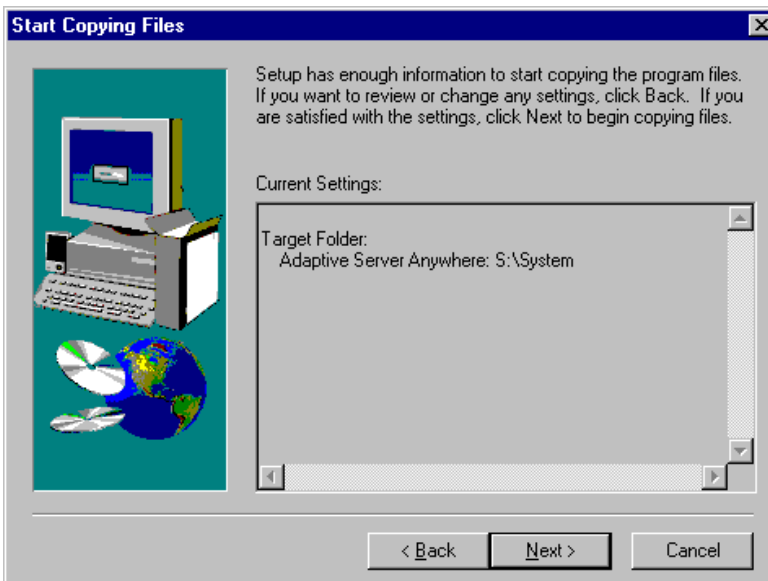
22. In the Current Location of ASA for NetWare dialog box, click the **Browse** button to locate and select the system folder. Click the **Next** button to proceed with the installation.



23. In the Welcome dialog box, click the **Next** button to open the Select Components dialog box.  
24. Select **Adaptive Server Anywhere** in the Select Components dialog box and click the **Next** button.



25. In the Start Copying Files dialog box, review the list of Current Settings. If a changed is required, click the **Back** button. Otherwise, click the **Next** button to begin. A progress bar will track the status of the files being copied.

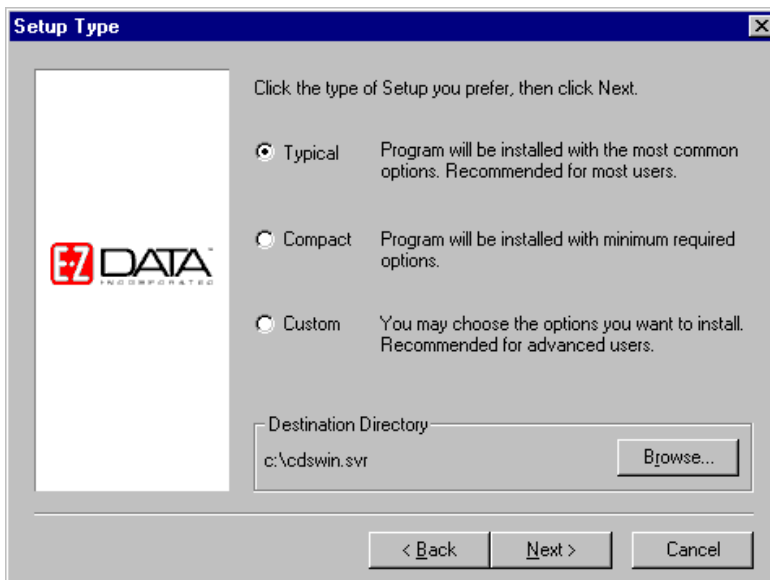


26. In the Setup Complete dialog box, click the **Finish** button to complete the Adaptive Server Anywhere 7.0 (EBF) Setup.

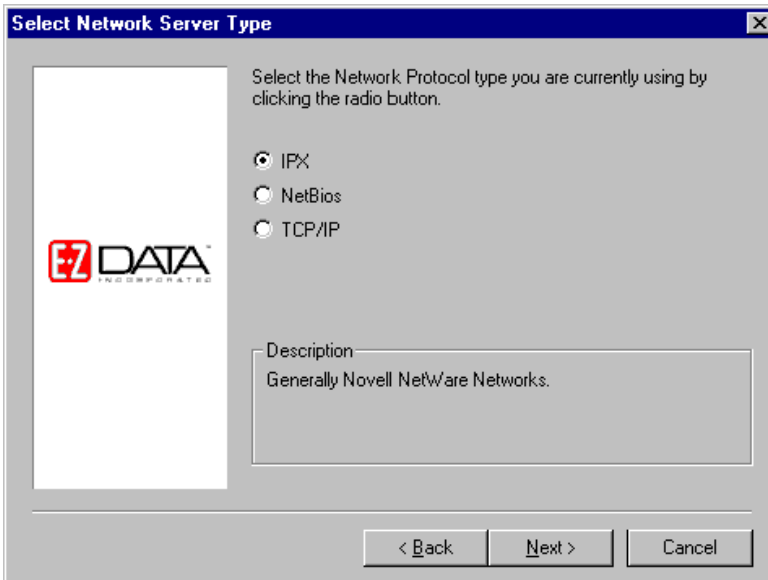


27. Click the **OK** button in the information dialog box to continue.
28. In the Setup Type dialog box, use **Typical** for the type of Setup. The Compact or Custom setups are not recommended for network installations. In the same dialog box, the default Destination Directory is C:\CDSWin.Svr. If necessary, click the **Browse** button to specify another directory (e.g., C:\Apps\CDSWin.Svr). Click the **Next** button when the Destination Directory is correct.

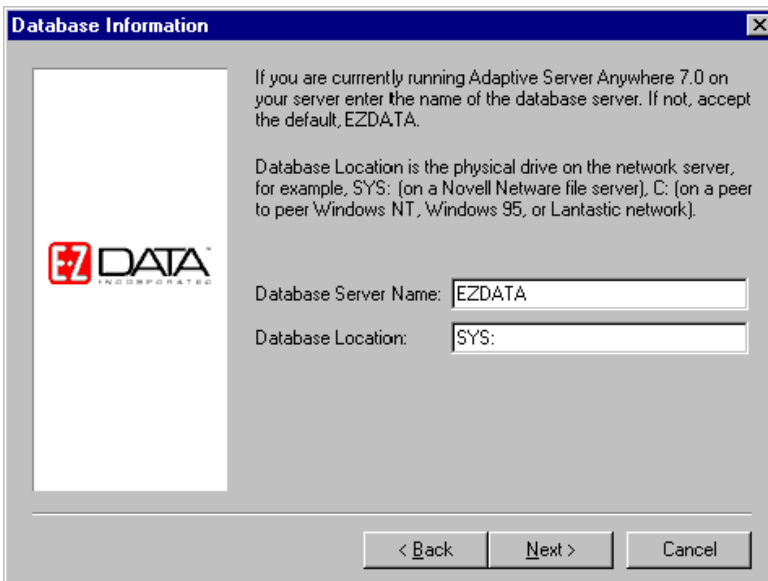
**Note:** NetWare 4.x users must use the TCP/IP protocol to install Client Data System 4.1.2 using Adaptive Server Anywhere 7.0.



29. In the Select Network Server Type dialog box, select the radio button next to the appropriate protocol for the existing network and then click the **Next** button.

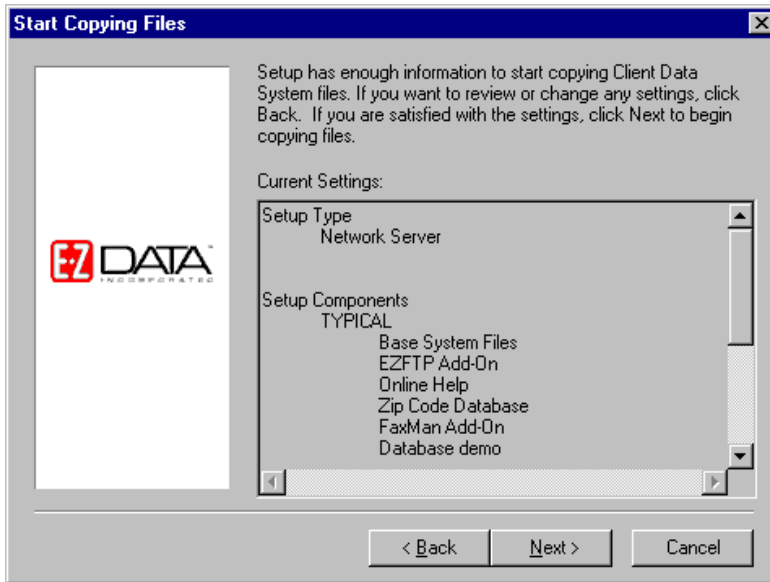


30. In the Database Information dialog box, use **EZDATA** as the Database Server Name and **C:** for the Database Location (these are the default settings). Change these settings if necessary and then click the **Next** button to continue.

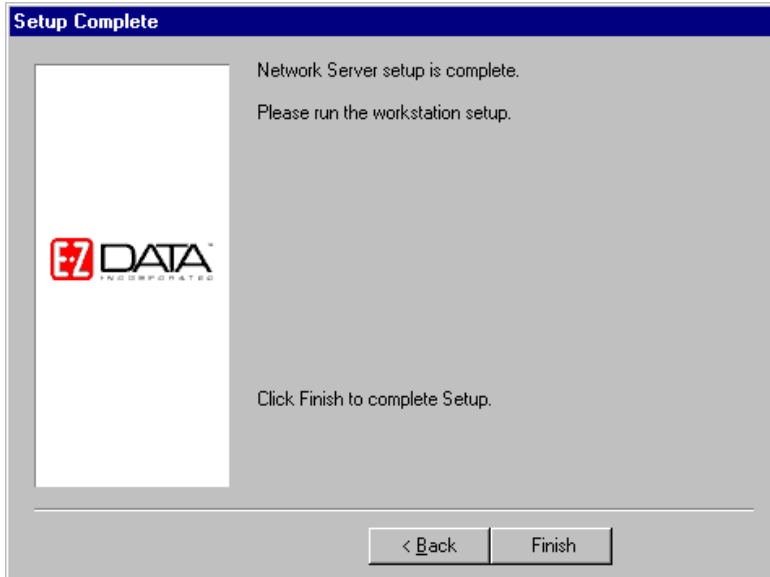


**Note:** If Sybase Adaptive Server Anywhere 7.0 is being used for another software application, use the name of that database server. The name is available from the task list of the database server. Please note that this name is case sensitive.

31. In the Start Copying Files dialog box, review the list of Current Settings. If a changed is required, click the **Back** button. Otherwise, click the **Next** button to begin. A progress bar will track the status of the files being copied. The copying process may take up to 15 minutes.



32. When the progress bar is at 97%, a prompt to insert the Control File diskette into drive A opens. Insert the diskette (or type C:\ in the dialog box if the file was copied to the hard disk) and then click the **OK** button to continue with the installation. A folder containing the new icons may open and obscure the dialog box. If this occurs, minimize the open folder to display the dialog box to continue.
33. When the Server Setup is complete, click the **Finish** button to close the Setup program. If a Control File disk is still in drive A:, remove it before continuing.



Program icons for CDS are not created during the software installation for the server. Icons are created during the installation of each workstation.

The CDS server installation is complete. Refer to the next section for information on running the server software.

## Novell NetWare 3.x, 4.xx, or 5.x Adaptive Server Anywhere Startup

Start Adaptive Server Anywhere at the file-server console. This action may require an Administrator or Supervisor password to access the console.

1. At the server console command prompt, type:

```
load sys:\system\dbsrv7 -n EZDATA -gd all -gp 4096
```

(Refer to Appendix A for details about setting up the database cache)

2. Click the **Enter** button to start Adaptive Server Anywhere.

**Note:** This procedure must be performed to start Adaptive Server Anywhere each time the server is powered down and started again. This procedure can be automated by adding the command in Step 1 to the AUTOEXEC.NCF file. Contact the network administrator to discuss automation of this startup.

3. When Adaptive Server Anywhere has been started, press ALT-ESC to switch between the system console, the Adaptive Server Anywhere console window, or other services.

### After the Server Installation Process

Once the server has been set up, install CDS on each workstation on the related network. For information on this installation, refer to the *CDS Installation Guide (Workstations)*.



## Appendix A - Setting Up Database Cache

By default, Sybase Adaptive Server Anywhere uses two megabytes of memory for caching. This default cache size is adequate for databases that are less than 20 MB in size. For very large databases, increasing the memory that is allocated to the server cache improves performance. Accessing database pages that have been cached in memory is much faster than reading the information directly from the server's hard disk. Allocating too much memory, however, will limit the available resources that other server-based programs may need to operate efficiently.

Generally, 10% of the total size of the database(s) is used to calculate the amount of memory to use for caching that will provide optimum performance. In the first example below, a 32-MB database and a 28-MB database produce a total database size of 60 MB. Using the general rule, 10% of the total database size, 6 MB of memory (60 MB x .10 = 6 MB) would be the optimum cache size.

The Sybase parameter *-c cache-size* is used to specify the amount of memory to be used for caching. Among other methods, the cache size can be specified with *nM* (number of Megabytes) as in the following examples.

### Example 1:

This is the typical Sybase Adaptive Server Anywhere startup command for a Windows 95/98/Me Server. The cache parameter in this example will allocate 6 Megabytes of memory for database caching.

```
\sqlanywhere7\win32\dbsrv7.exe -n EZDATA -gd all -gp 4096 -c 6M
```

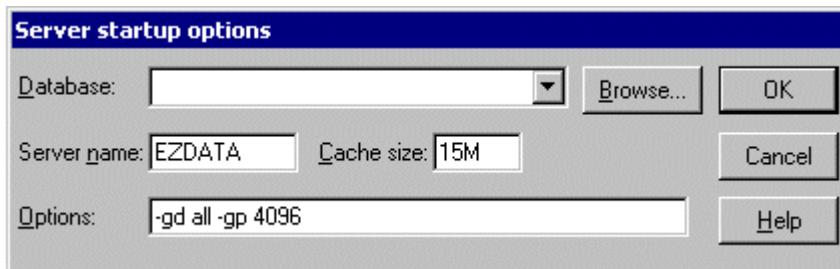
### Example 2:

This is the typical Sybase Server startup command for a NetWare Server. The cache parameter in this example will allocate 8 Megabytes of memory for database caching.

```
load sys:\system\dbsrv7 -n EZDATA -gd all -gp 4096 -c 8M
```

### Example 3:

The following Sybase Server parameters are typically used to create a new service on a Windows NT Server. The cache parameter in this example will allocate 15 Megabytes of memory for database caching.



## **Appendix B - Glossary of Terms**

### **Adaptive Server Anywhere 7.0**

A product of Sybase, Inc. and the database management system that CDS uses.

### **CDS**

Client Data System®, a registered trademark.

### **Client/Server**

Client/Server technology is the basis for the design of software and hardware architectures that support shared processing between a server and a workstation. Shared processing results in increased system speed and performance over traditional methods where the workstation is burdened with all of the processing. The client/server architecture of Sybase Adaptive Server Anywhere 7.0 exemplifies the principles of this technology and provides superior performance as a DBMS.

With traditional network databases, individual workstation resources are used to locate and retrieve data from the server. The Client/Server architecture allows the workstation to retain most of its resources by just sending requests for information to the server. The server then uses its own resources to process the request and return the requested data to the workstation. This also improves system and program performance by cutting down on network traffic.

### **Default**

A setting or choice that will be used unless it is changed. For example, CDS workstation files are installed, by default, in the C:\ProgramFiles\CDSWin directory.

### **CDS Desktop**

The CDS desktop is the first window that appears after logging in to the CDS program and the starting point for access to all other areas of the program.

### **Path Name**

The route to locate a file on disk. For example, c:\data\client1.bmp identifies the location of the "client1.bmp" file as the "data" directory on the "C" drive.

### **Peer-to-peer**

Peer-to-peer is a term that describes a network of two or more computers where each computer acts as a server to other computers on the same network. The computer where a server-based program is installed in this type of network is often referred to as a non-dedicated server.

### **User Profile**

The User Profile contains the privileges and preferences assigned to a CDS user (i.e., Database name, linked Contact or Agent record, customization details, etc.)